



£270,000

16 Finch Drive Barton Seagrave NN15 6SB

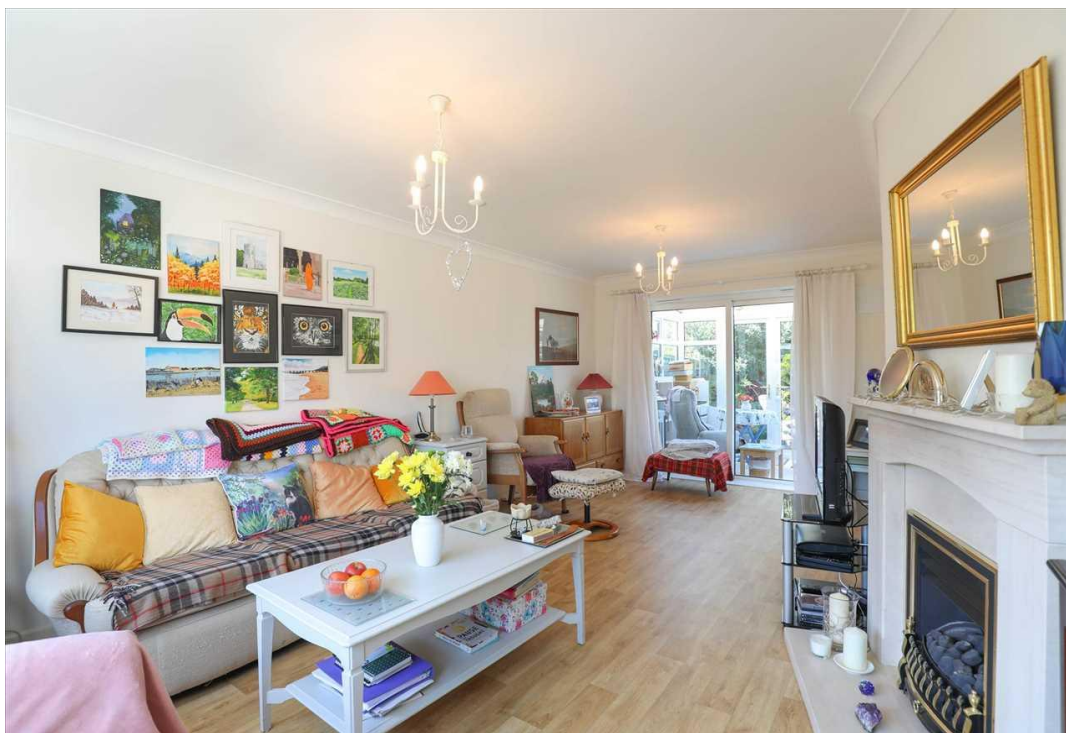


Carter Williams
Estate and Letting Agents



Situated in the sought-after village of Barton Seagrave, this well-presented three-bedroom semi-detached home offers spacious and versatile accommodation, ideal for families.

Approaching the property, you are greeted by a low-level wall forming the front boundary, with a paved driveway providing off-road parking and leading to a single garage. The front garden is attractively designed with a low-maintenance pebble finish. Upon entering, the entrance hallway features stairs rising to the first floor and useful built-in under stairs storage. To the left, the main reception room is a generously proportioned living/dining space. The living area benefits from a feature fireplace and a window overlooking the front aspect, while the dining area to the rear enjoys sliding glass doors opening into the conservatory. The conservatory provides a pleasant additional living space and offers direct access to the rear garden. The kitchen is also accessed from the hallway and is fitted with a range of base and wall-mounted units, with plumbing for white goods. Dual aspect windows to the side and rear allow for plenty of natural light, and a door leads conveniently out to the garden. Upstairs, the property offers three bedrooms. The principal bedroom enjoys views over the front aspect and benefits from fitted storage. Bedroom two overlooks the rear garden, while bedroom three faces the front and includes useful over-stairs storage. The family bathroom is fitted with a three-piece suite comprising a low-level WC, hand wash basin, and a bath with shower over, along with an additional storage cupboard. The landing is brightened by a side aspect window. Externally, the rear garden has been beautifully maintained and designed for low upkeep. A paved patio area provides an ideal space for outdoor seating and entertaining, accessible from both the kitchen and conservatory. The remainder of the garden is predominantly pebble-finished, complemented by well-stocked flower beds, a covered seating area, a small pond, and mature trees along the boundary. A storage shed and a side access door into the garage add further practicality.



Conveniently located close to local amenities, including schools, this attractive home offers a fantastic opportunity for families seeking a comfortable and well-kept property in a desirable location.

Council Tax Band: B
EPC Rating: To Follow





Living/ Dining 3.80m (12' 6") x 6.07m (19' 11")

Conservatory 2.75m (9' 0") x 2.17m (7' 1")

Kitchen 3.01m (9' 11") x 2.60m (8' 6")

Bedroom 3.10m (10' 2") x 3.97m (13' 0")

Bedroom 3.71m (12' 2") x 2.02m (6' 8")

Bedroom 3.07m (10' 1") x 2.20m (7' 3")

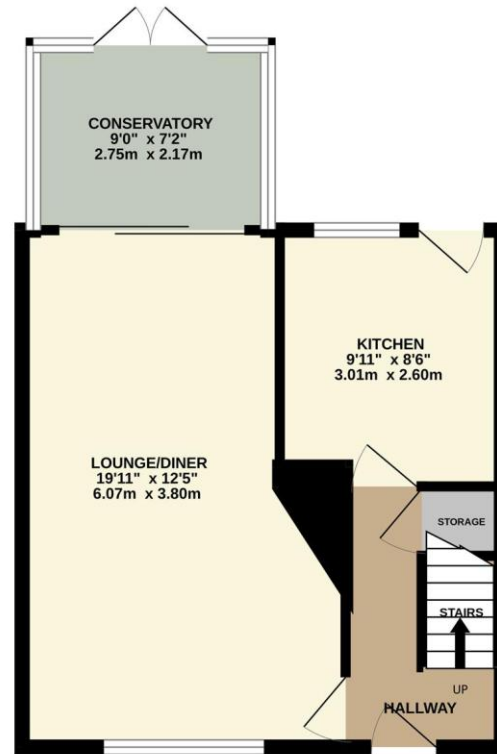
Bathroom 1.98m (6' 6") x 1.92m (6' 4")

Garden

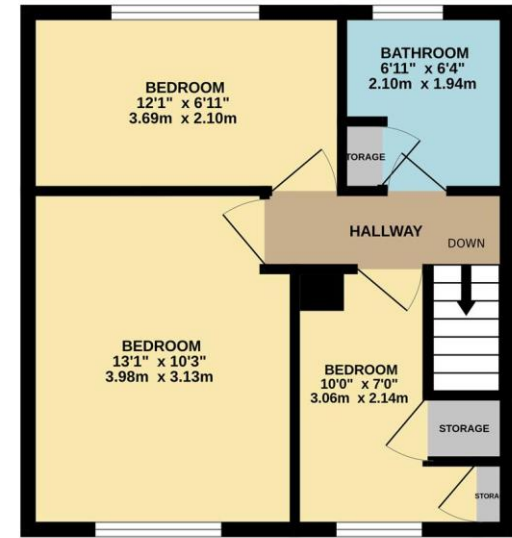




GROUND FLOOR
425 sq.ft. (39.5 sq.m.) approx.



1ST FLOOR
365 sq.ft. (33.9 sq.m.) approx.



TOTAL FLOOR AREA : 791 sq.ft. (73.4 sq.m.) approx.

Whilst every attempt has been made to ensure the accuracy of the floorplan contained here, measurements of doors, windows, rooms and any other items are approximate and no responsibility is taken for any error, omission or mis-statement. This plan is for illustrative purposes only and should be used as such by any prospective purchaser. The services, systems and appliances shown have not been tested and no guarantee as to their operability or efficiency can be given.
Made with Metropix ©2026

Selling your property?

Get in touch to arrange your
FREE market appraisal!

- Honest, friendly advice from a hardworking dedicated team
- Regular market updates
- Professional photography
- Floorplans
- Advertising on major property portals
- Exposure on social media
- Excellent local knowledge
- Mortgage advice
- In-house energy performance assessor
- Fantastic customer service

Find out why so many people trust
Carter Williams with their property needs!



60 High Street
Burton Latimer
NN15 5LB
01536 723561

info@carter-williams.co.uk
www.carter-williams.co.uk

