



**£250,000 OIEO**

5 Wold Road Burton Latimer NN15 5PN



**Carter Williams**  
Estate and Letting Agents





Carter Williams are delighted to offer this beautifully presented two-bedroom end-of-terrace cottage, offering a perfect blend of character and modern touches, nestled in a highly sought-after area close to local amenities.

Upon entering the property, an entrance hallway provides access to the main living space and the kitchen. The bright and airy living room is a standout feature, boasting a set of French doors that open out into a delightful front-facing courtyard garden—perfect for relaxing or entertaining. Additional features include a side-aspect window, a charming feature fireplace, and practical fitted understairs storage.

The kitchen offers a range of base and wall-mounted units, with ample space for free-standing white goods. Upstairs, a spacious landing leads to two generously sized bedrooms, ideal for a small family or working professionals. The first floor also benefits from useful fitted storage and a well-appointed four-piece family bathroom, comprising a bath, shower cubicle, hand wash basin, and WC.

The property also features a large loft space that is boarded offering additional storage space with the potential for a conversion (subject to planning).

Externally, the property enjoys a quaint courtyard garden and the added bonus of off-road parking.

This cottage offers character, comfort, and convenience in equal measure, and early viewing is highly recommended.

Contact Carter Williams today.

Council Tax Band: B  
EPC Rating: D





Living Room 5.39m (17' 8") x 4.04m (13' 3")  
Max

Kitchen 2.50m (8' 2") x 3.56m (11' 8") Max

Bedroom 3.93m (12' 11") Max x 3.03m (9' 11") Max

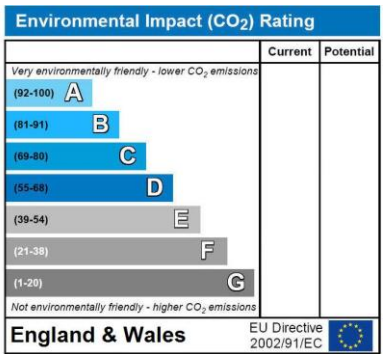
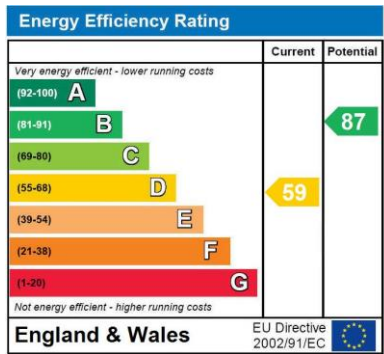
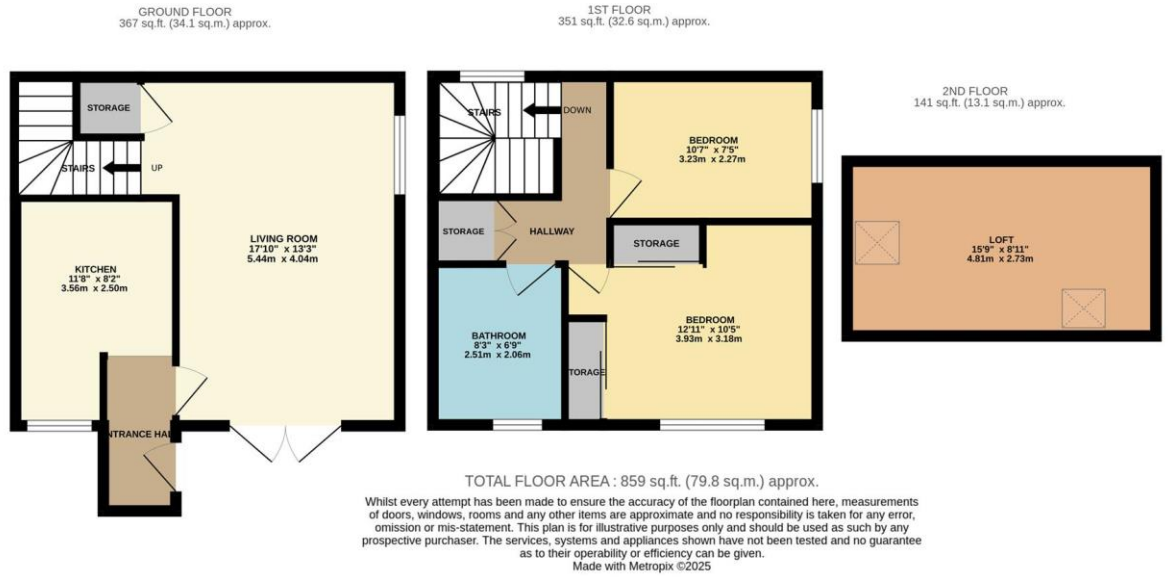
Bedroom 3.23m (10' 7") x 2.27m (7' 5")

Bathroom 2.51m (8' 3") x 2.06m (6' 9")

Loft 4.81m (15' 9") x 2.73m (8' 11")







# Selling your property?

Get in touch to arrange your  
FREE market appraisal!

- Honest, friendly advice from a hardworking dedicated team
- Regular market updates
- Professional photography
- Floorplans
- Advertising on major property portals
- Exposure on social media
- Excellent local knowledge
- Mortgage advice
- In-house energy performance assessor
- Fantastic customer service

Find out why so many people trust  
Carter Williams with their property needs!



60 High Street  
Burton Latimer  
NN15 5LB  
01536 723561  
[info@carter-williams.co.uk](mailto:info@carter-williams.co.uk)  
[www.carter-williams.co.uk](http://www.carter-williams.co.uk)

