



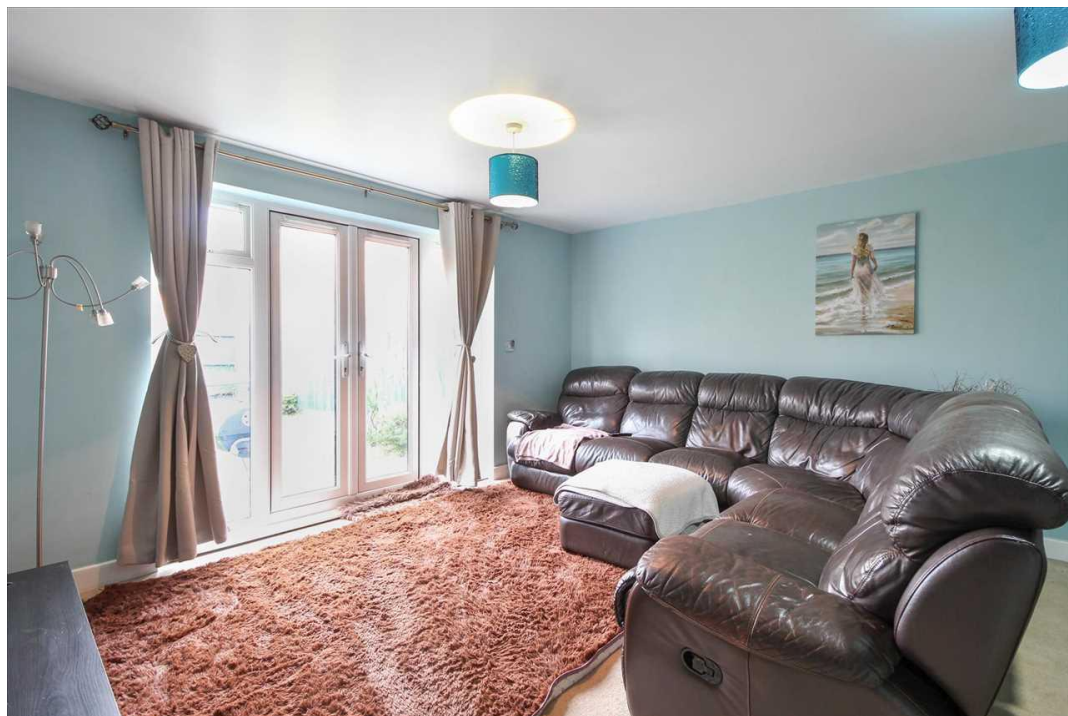
£330,000

14 Hurlingham Road Market Harborough



Carter Williams

Estate and Letting Agents



Carter Williams are delighted to bring to the market this stunning four-bedroomed semi-detached property offered with no onward chain!

Ground floor accommodation offers open plan living with spacious living/ dining room benefiting from built-in under stairs storage and direct access to the enclosed rear garden. The fitted kitchen offers an array of base level and wall mounted units with plumbing for white goods and views over front elevation. A sizeable cloakroom can also be located on the ground floor accessed via the entrance hallway. On the first floor, the generously sized second bedroom is positioned over the garage and boasts dual aspects views over front and rear. The third and fourth well-proportioned bedrooms are also found on this level in addition to the three-piece family bathroom with shower over bath. The top floor gives way to breathtaking principle bedroom which spans the length of the house, offering versatile living options including area for potential fitted storage. The master bedroom also benefits from three-piece en-suite shower room with velux window.



Externally, the property benefits from a good-sized rear garden laid with lawn and enclosed with fencing. To the front, off-road parking for multiple vehicles is also offered.

Situated conveniently close to local amenities, good schooling and public transport links, we feel this property would make a fantastic family home!

Viewing is highly advised, contact Carter Williams today for further information!

Council Tax Band: D
EPC Rating: C





Lounge/Diner 4.41m (14' 6") x 5.25m (17' 3")

Kitchen 2.31m (7' 7") x 2.81m (9' 3")

Bedroom 4.43m (14' 6") Max x 8.19m (26' 10")

En-Suite 2.13m (7' 0") x 2.07m (6' 9")

Bedroom 4.42m (14' 6") x 3.24m (10' 8")

Bedroom 2.59m (8' 6") x 5.20m (17' 1")

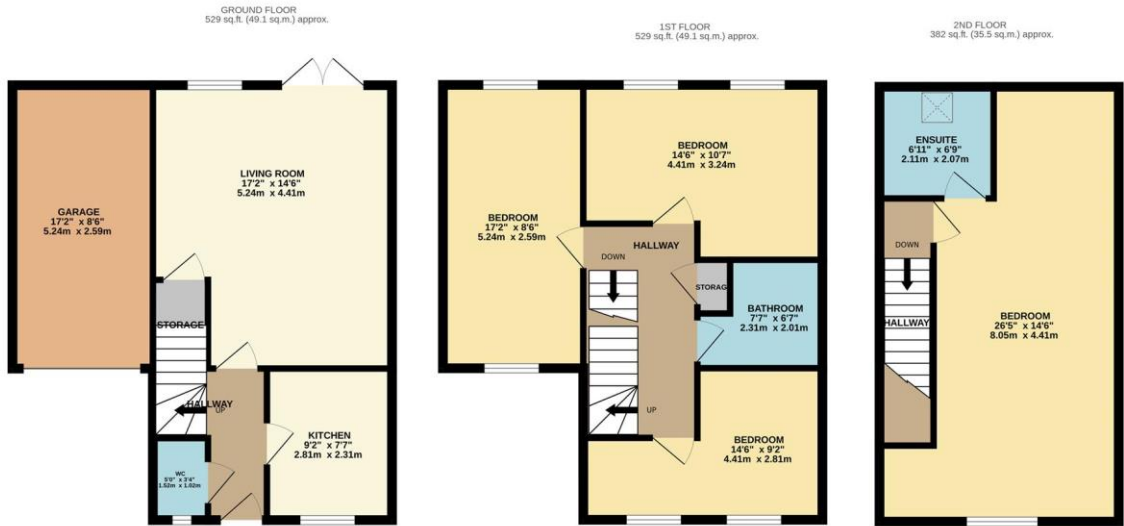
Bedroom 4.42m (14' 6") Max x 2.84m (9' 4")

Bathroom 2.41m (7' 11") Max x 1.95m (6' 5")

W/C 1.50m (4' 11") x 0.96m (3' 2")

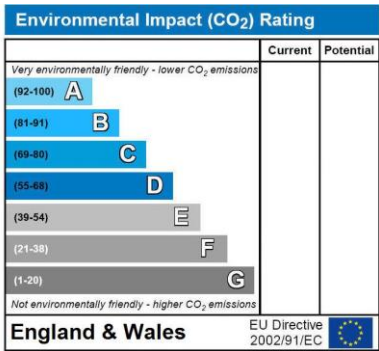
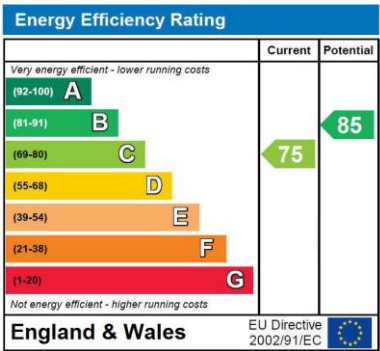
Garden





TOTAL FLOOR AREA : 1440 sq.ft. (133.8 sq.m.) approx.

Whilst every attempt has been made to ensure the accuracy of the floorplan contained here, measurements of doors, windows, rooms and any other items are approximate and no responsibility is taken for any error, omission or mis-statement. This plan is for illustrative purposes only and should be used as such by any prospective purchaser. The services, systems and appliances shown have not been tested and no guarantee as to their operability or efficiency can be given.
Made with Metropix ©2024



Selling your property?

Get in touch to arrange your
FREE market appraisal!

- Honest, friendly advice from a hardworking dedicated team
- Regular market updates
- Professional photography
- Floorplans
- Advertising on major property portals
- Exposure on social media
- Excellent local knowledge
- Mortgage advice
- In-house energy performance assessor
- Fantastic customer service

Find out why so many people trust
Carter Williams with their property needs!



60 High Street
Burton Latimer
NN15 5LB
01536 723561
info@carter-williams.co.uk
www.carter-williams.co.uk

