



£250,000

30 Woodland Drive Burton Latimer NN15 5NG



Carter Williams
Estate and Letting Agents



SOLD PRIOR TO MARKETING!!

Carter Williams are delighted to offer for sale this larger-than-average three bedroomed semi-detached property in Burton Latimer. Welcomed to the market with no onward chain, this spacious property presents a wonderful opportunity to own an already well-established home with potential for further enhancements.

Internally, a light and airy porch leads you through into the main accommodation which comprises of; lounge with views over front aspect, kitchen/ dining room comprising of base level and wall mounted storage, fitted storage cupboards and access to the rear lobby which hosts the ground floor w/c and undecorated storage room. Upstairs there are three well-proportioned bedrooms all benefiting from fitted storage and a modern three-piece shower room. Externally, off road parking is offered to the front aspect in addition to an area laid with lawn and to the rear the property provides a low-maintenance garden laid to lawn with patio area and is enclosed with fencing, accessed via the rear lobby or garage. The single garage is accessed via the roll top garage door or through the internal door from the entrance porch.

Tucked away at the end of a cul-de-sac and offered with no onward chain, we highly anticipate a quick sale on this property. Contact Carter Williams today!

Council Tax Band: B
EPC Rating: C





Lounge 4.02m (13' 2") x 3.94m Max (12' 11")

Kitchen/Diner 6.06m (19' 11") x 3.13m (10' 3")

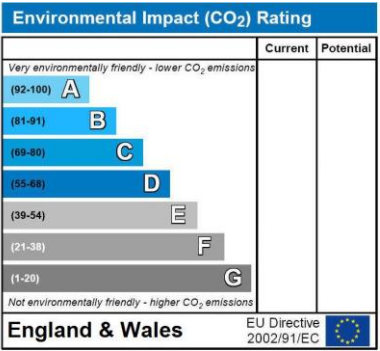
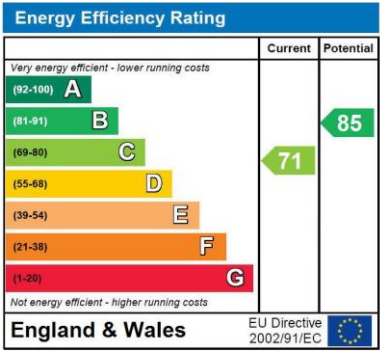
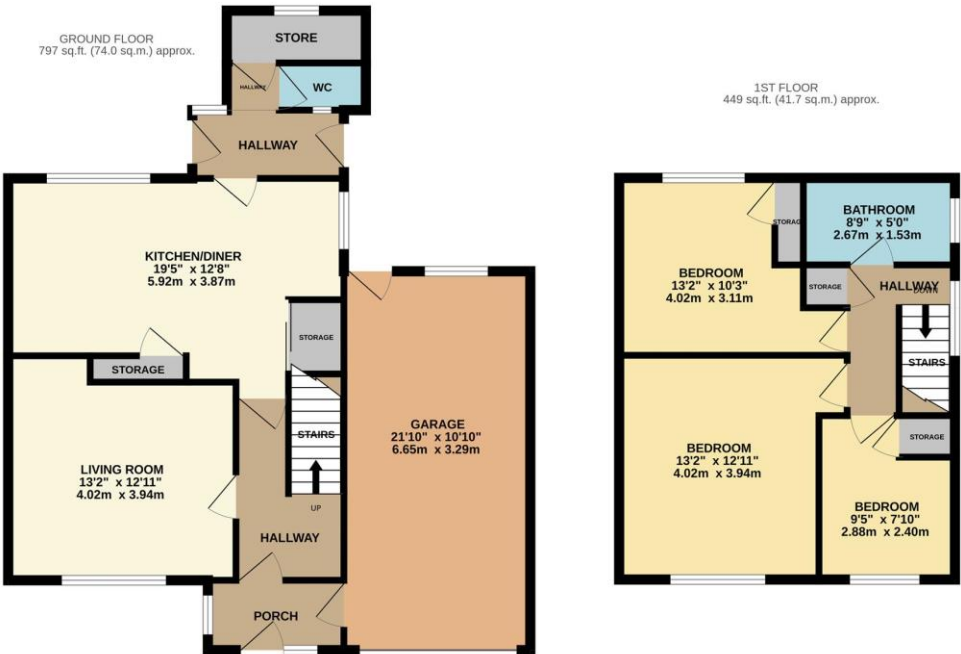
Bedroom 4.03m (13' 3") Max x 4.01m (13' 2") Max

Bedroom 4.03m (13' 3") x 3.05m (10' 0")

Bedroom 2.44m (8' 0") x 2.88m (9' 5")

Bathroom 2.61m (8' 7") x 1.53m (5' 0")





Selling your property?

Get in touch to arrange your
FREE market appraisal!

- Honest, friendly advice from a hardworking dedicated team
- Regular market updates
- Professional photography
- Floorplans
- Advertising on major property portals
- Exposure on social media
- Excellent local knowledge
- Mortgage advice
- In-house energy performance assessor
- Fantastic customer service

Find out why so many people trust
Carter Williams with their property needs!



60 High Street
Burton Latimer
NN15 5LB
01536 723561
info@carter-williams.co.uk
www.carter-williams.co.uk

